

# 2014 MACK PINNACLE Day

# Equipment Information



**Price:** \$15,000

**Location:** Chesapeake, VA

**Unit Number:** 208671

**Unit Address:**

**City:** Chesapeake

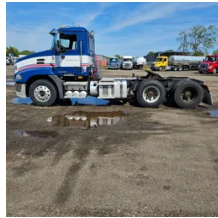
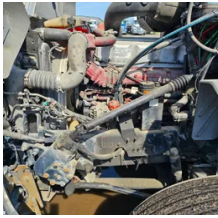
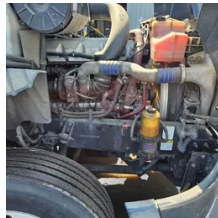
**State:** VA - Virginia

**Comments:**

CHECK ENGINE LIGHT ON + CLUTCH WORN OUT, WILL NEED REPLACEMENT

|                             |          |
|-----------------------------|----------|
| <b>Make</b>                 | MACK     |
| <b>Model</b>                | PINNACLE |
| <b>Year</b>                 | 2014     |
| <b>Mileage</b>              | 427,916  |
| <b>Fuel Type</b>            | Diesel   |
| <b>Drivable</b>             | No       |
| <b>Unit Starts and Runs</b> | Yes      |
| <b>Check Engine Light</b>   | On       |
| <b>ABS Light</b>            | Off      |
| <b>Engine Derated</b>       | No       |





|                               |                |
|-------------------------------|----------------|
| <b>Needs Towed</b>            | Yes            |
| <b>Cab</b>                    | Day            |
| <b>Engine</b>                 | MP8 MACK       |
| <b>Transmission</b>           | Manual UNKNOWN |
| <b>State</b>                  | VA - Virginia  |
| <b>City</b>                   | Chesapeake     |
| <b>Wheel Or Hook</b>          | Fifth Wheel    |
| <b>Steer Tire Size</b>        | LOW PRO 22.5   |
| <b>Drive Tire Size</b>        | LOW PRO 22.5   |
| <b>Rear Suspension</b>        | Air            |
| <b>Rear Suspension Rating</b> | UNKNOWN        |
| <b>Rear Axles</b>             | Locking        |
| <b>Wet Kit</b>                | PTO            |
| <b>APU</b>                    | Yes            |
| <b>APU</b>                    | ROPER PUMP     |
| <b>Last DOT Inspection</b>    | 2024-03-15     |
| <b>Out of Service Date</b>    | 2024-04-19     |

[Tractor 208671.eml](#)