

# 2015 PETERBILT 579 Day

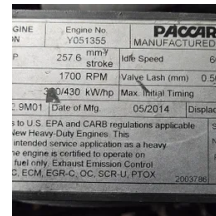
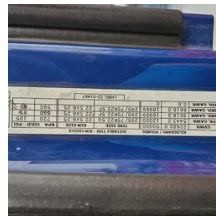
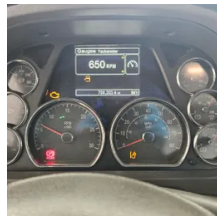


# Equipment Information

**Price:** \$25,000  
**Location:** Wood River, IL  
**Unit Number:** 1110246  
**Unit Address:**  
**City:** Wood River  
**State:** IL - Illinois

**Comments:**  
 UNIT WILL NEED JUMP START TO RUN - TAG AXLE

<b>Make</b>	PETERBILT
<b>Model</b>	579
<b>Year</b>	2015
<b>Mileage</b>	706,203
<b>Fuel Type</b>	Diesel
<b>Drivable</b>	Yes
<b>Unit Starts and Runs</b>	Yes
<b>Check Engine Light</b>	On
<b>ABS Light</b>	Off
<b>Engine Derated</b>	No





<b>Needs Towed</b>	No
<b>Cab</b>	Day
<b>Engine</b>	MX13 PACCAR
<b>Transmission</b>	Manual EATON FULLER
<b>State</b>	IL - Illinois
<b>City</b>	Wood River
<b>Wheel Or Hook</b>	Fifth Wheel
<b>Steer Tire Size</b>	297/75R22.5
<b>Drive Tire Size</b>	297/75R22.5
<b>Rear Suspension</b>	Air
<b>Rear Suspension Rating</b>	40,000
<b>Rear Axles</b>	Locking
<b>Wet Kit</b>	PTO
<b>APU</b>	No
<b>Last DOT Inspection</b>	2023-07-24
<b>Out of Service Date</b>	2024-04-26

