

# 2015 Peterbilt 579 Sleeper



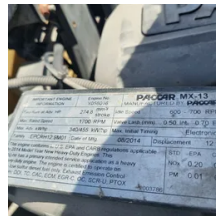
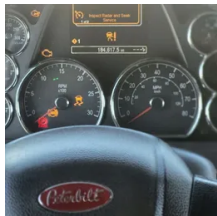
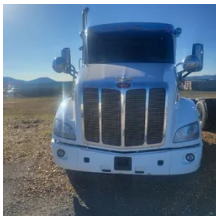
## Equipment Information

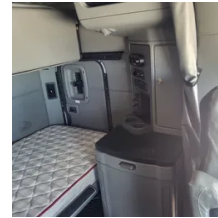
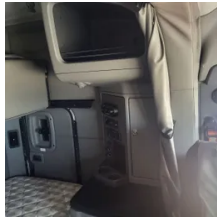
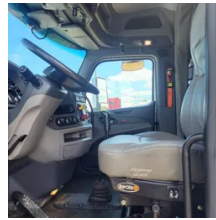
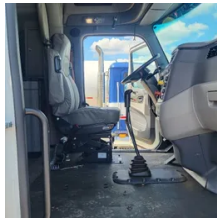
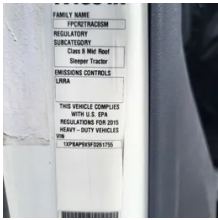
**Price:** \$21,999  
**Location:** Nashville, TN  
**Unit Number:** 2210952  
**Unit Address:**  
**City:** Nashville  
**State:** TN - Tennessee

### Comments:

Odometer replaced; ECM reading 606,920

<b>Make</b>	Peterbilt
<b>Model</b>	579
<b>Year</b>	2015
<b>Mileage</b>	184,617
<b>Fuel Type</b>	Diesel
<b>Drivable</b>	Yes
<b>Unit Starts and Runs</b>	Yes
<b>Check Engine Light</b>	On
<b>ABS Light</b>	Off
<b>Engine Derated</b>	No





<b>Needs Towed</b>	No
<b>Cab</b>	Sleeper
<b>Engine</b>	MX13 Paccar
<b>Transmission</b>	Manual Eaton Fuller
<b>State</b>	TN - Tennessee
<b>City</b>	Nashville
<b>Wheel Or Hook</b>	Fifth Wheel
<b>Steer Tire Size</b>	275-80-22.5
<b>Drive Tire Size</b>	445-50-22.5
<b>Rear Suspension</b>	Air
<b>Rear Suspension Rating</b>	33001
<b>Rear Axles</b>	Locking
<b>Wet Kit</b>	N_A
<b>APU</b>	Yes
<b>APU</b>	tri pak
<b>Last DOT Inspection</b>	2023-10-12
<b>Out of Service Date</b>	2024-02-13

