

# 2015 Mack CXU613T Day



# Equipment Information

**Price:** \$25,000

**Location:** Phoenix, AZ

**Unit Number:** 1110821

**Unit Address:**

**City:** Phoenix

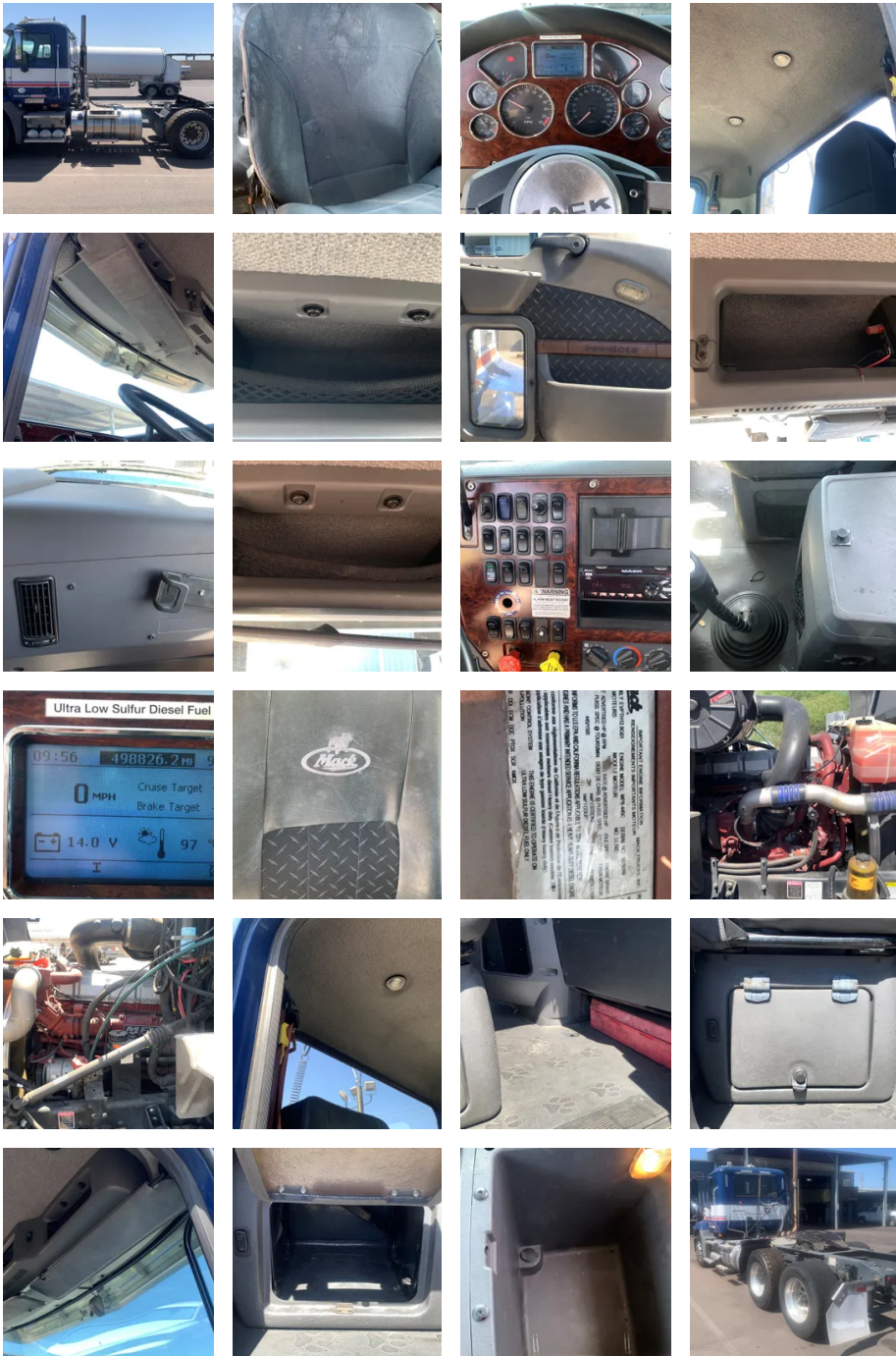
**State:** AZ - Arizona

### Comments:

clutch is bad. unit will not go into gear while running

|                             |         |
|-----------------------------|---------|
| <b>Make</b>                 | Mack    |
| <b>Model</b>                | CXU613T |
| <b>Year</b>                 | 2015    |
| <b>Mileage</b>              | 498,826 |
| <b>Fuel Type</b>            | Diesel  |
| <b>Drivable</b>             | No      |
| <b>Unit Starts and Runs</b> | Yes     |
| <b>Check Engine Light</b>   | Off     |
| <b>ABS Light</b>            | Off     |
| <b>Engine Derated</b>       | No      |





|                               |                     |
|-------------------------------|---------------------|
| <b>Needs Towed</b>            | Yes                 |
| <b>Cab</b>                    | Day                 |
| <b>Engine</b>                 | MP8 Mack            |
| <b>Transmission</b>           | Manual Eaton-fuller |
| <b>State</b>                  | AZ - Arizona        |
| <b>City</b>                   | Phoenix             |
| <b>Wheel Or Hook</b>          | Fifth Wheel         |
| <b>Steer Tire Size</b>        | 275/80RR22.5        |
| <b>Drive Tire Size</b>        | 445/50R22.5         |
| <b>Rear Suspension</b>        | Air                 |
| <b>Rear Suspension Rating</b> | 36000               |
| <b>Rear Axles</b>             | Tag                 |
| <b>Wet Kit</b>                | PTO                 |
| <b>APU</b>                    | No                  |
| <b>Last DOT Inspection</b>    | 2024-02-09          |
| <b>Out of Service Date</b>    | 2024-02-14          |

[Estimate\\_18004168.pdf](#)

