

## 2017 Peterbilt 579 Sleeper



## Equipment Information

**Price:** \$24,500

**Location:** Gurnee, IL

**Unit Number:** 60197

**Unit Address:**

**City:** Gurnee

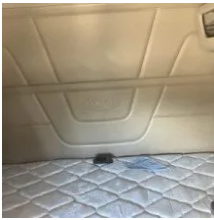
**State:** IL - Illinois

### Comments:

Engine has a lot of blowby causing the crankcase to over pressurize. The driver side step is damaged. There are various spots on the unit with minor body damage. The Passenger side is missing a grab handle. Truck is equipped with a PTO, but the hydraulic pump and hydro pack were removed prior to sale. This unit will be able to drive onto a trailer to be loaded/unloaded but should not be run on the highway. There is an audible air leak coming from under the hood near the foot valve. Stop engine light comes on intermittently. This unit is equipped with a refrigerator. New Turbo Actuator. New AC Compressor, TXV, and ac seals. Truck pulls to the left when over 65 mph.



|                |           |
|----------------|-----------|
| <b>Make</b>    | Peterbilt |
| <b>Model</b>   | 579       |
| <b>Year</b>    | 2017      |
| <b>Mileage</b> | 696,771   |



|                             |                  |
|-----------------------------|------------------|
| <b>Fuel Type</b>            | Diesel           |
| <b>Drivable</b>             | Yes              |
| <b>Unit Starts and Runs</b> | Yes              |
| <b>Check Engine Light</b>   | On               |
| <b>ABS Light</b>            | Off              |
| <b>Engine Derated</b>       | Yes              |
| <b>Needs Towed</b>          | Yes              |
| <b>Cab</b>                  | Sleeper          |
| <b>Engine</b>               | ISX15 Cummins    |
| <b>Transmission</b>         | Automatic Fuller |
| <b>State</b>                | IL - Illinois    |
| <b>City</b>                 | Gurnee           |
| <b>Wheel Or Hook</b>        | Fifth Wheel      |
| <b>Steer Tire Size</b>      | 11r22.5          |
| <b>Drive Tire Size</b>      | 80r22.5          |
| <b>Rear Suspension</b>      | Air              |
| <b>Rear Axles</b>           | Locking          |
| <b>Wet Kit</b>              | PTO              |

|                            |            |
|----------------------------|------------|
| <b>APU</b>                 | No         |
| <b>APU</b>                 | n/a        |
| <b>Last DOT Inspection</b> | 2023-11-13 |
| <b>Out of Service Date</b> | 2024-05-10 |