

# 2015 Peterbilt 579 Sleeper



## Equipment Information

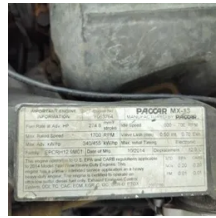
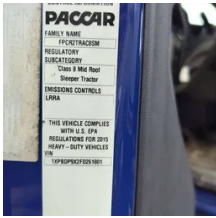
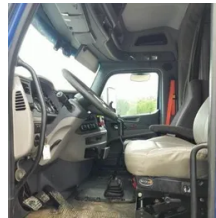
**Price:** \$25,000  
**Location:** Magnolia , AR  
**Unit Number:** 2211077  
**Unit Address:**  
**City:** Magnolia  
**State:** AR - Arkansas

### Comments:

Unit needs a rear end and batteries . Truck will run but will need batteries, we do not recommend driving the unit until the rear end is replaced . No repair estimate available.

<b>Make</b>	Peterbilt
<b>Model</b>	579
<b>Year</b>	2015
<b>Mileage</b>	791,357
<b>Fuel Type</b>	Diesel
<b>Drivable</b>	No
<b>Unit Starts and Runs</b>	No
<b>Check Engine Light</b>	On
<b>ABS Light</b>	Off





<b>Engine Derated</b>	No
<b>Needs Towed</b>	Yes
<b>Cab</b>	Sleeper
<b>Engine</b>	MX 13 Paccar
<b>Transmission</b>	Manual eaton
<b>State</b>	AR - Arkansas
<b>City</b>	Magnolia
<b>Wheel Or Hook</b>	Fifth Wheel
<b>Steer Tire Size</b>	275/80 r22.5
<b>Drive Tire Size</b>	275/80 r22.5
<b>Rear Suspension</b>	Air
<b>Rear Suspension Rating</b>	19000
<b>Rear Axles</b>	Locking
<b>Wet Kit</b>	N_A
<b>APU</b>	No
<b>Last DOT Inspection</b>	2023-09-26
<b>Out of Service Date</b>	2024-05-03

