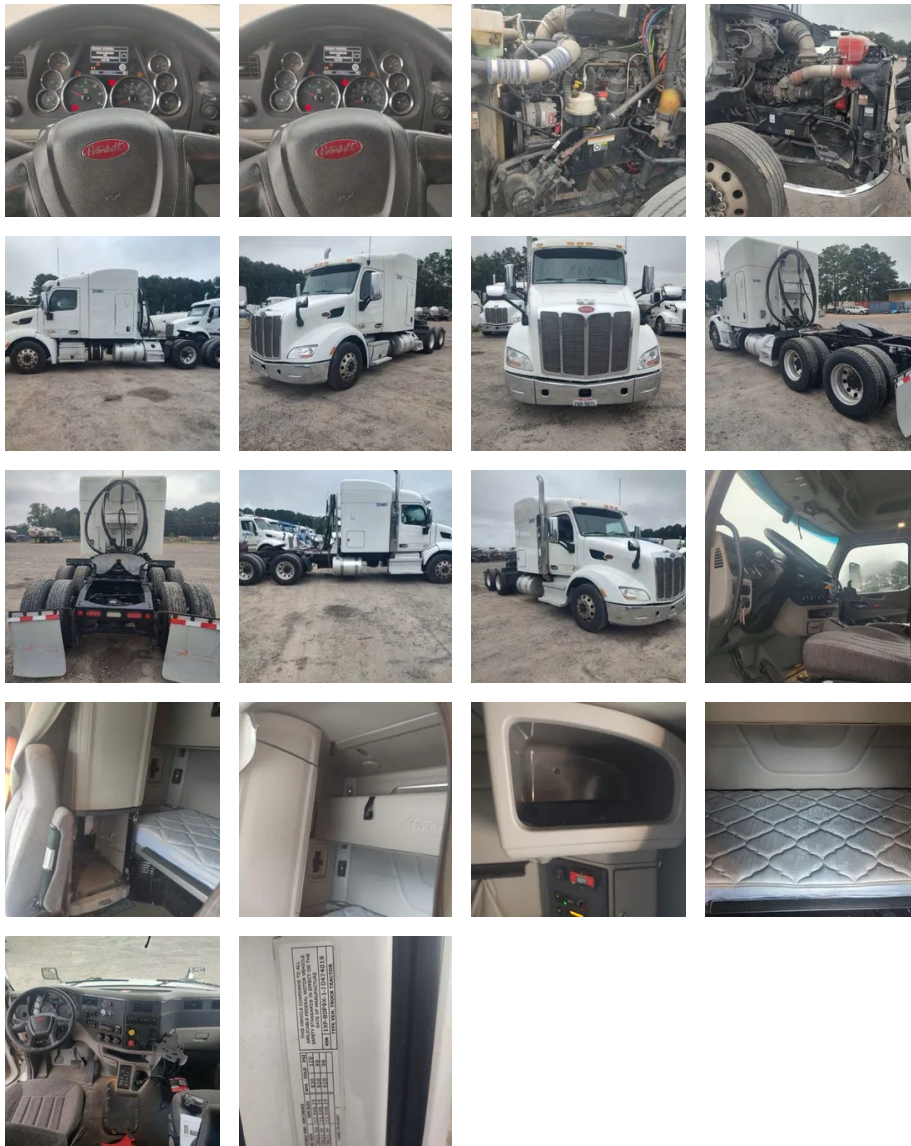


# 2018 Peterbilt 579 Sleeper

# Equipment Information



**Price:** \$29,500  
**Location:** Magnolia , AR  
**Unit Number:** 2214661  
**Unit Address:**  
**City:** Magnolia  
**State:** AR - Arkansas

### Comments:

Truck has a bent steer axle , see estimate attached for all repairs needed .

<b>Make</b>	Peterbilt
<b>Model</b>	579
<b>Year</b>	2018
<b>Mileage</b>	678,902
<b>Fuel Type</b>	Diesel
<b>Drivable</b>	No
<b>Unit Starts and Runs</b>	Yes
<b>Check Engine Light</b>	On
<b>ABS Light</b>	Off
<b>Engine Derated</b>	No

<b>Needs Towed</b>	Yes
<b>Cab</b>	Sleeper
<b>Engine</b>	MX 13 Paccar MX 13
<b>Transmission</b>	Automatic eaton
<b>State</b>	AR - Arkansas
<b>City</b>	Magnolia
<b>Wheel Or Hook</b>	Fifth Wheel
<b>Steer Tire Size</b>	275/80 r22.5
<b>Drive Tire Size</b>	275/80 r22.5
<b>Rear Suspension</b>	Air
<b>Rear Suspension Rating</b>	19000
<b>Rear Axles</b>	Locking
<b>Wet Kit</b>	PTO
<b>APU</b>	No
<b>Last DOT Inspection</b>	2024-04-15
<b>Out of Service Date</b>	2024-05-14

[2214661 estimate.pdf](#)

