

# 2017 Peterbilt 579 Day



# Equipment Information

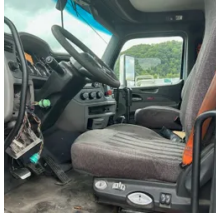
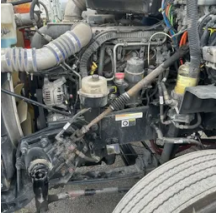
**Price:** \$26,500  
**Location:** Newell, WV  
**Unit Number:** 1113344  
**Unit Address:**  
**City:** Newell  
**State:** WV - West Virginia

## Comments:

Engine is bad and has the rod bearings off. No DPF See attached estimate . Peterbilt unhooked everything when they started taking the engine apart so cannot get a picture of the odometer.

|                             |           |
|-----------------------------|-----------|
| <b>Make</b>                 | Peterbilt |
| <b>Model</b>                | 579       |
| <b>Year</b>                 | 2017      |
| <b>Mileage</b>              | 498,777   |
| <b>Fuel Type</b>            | Diesel    |
| <b>Drivable</b>             | No        |
| <b>Unit Starts and Runs</b> | No        |
| <b>Check Engine Light</b>   | On        |
| <b>ABS Light</b>            | Off       |





|                               |                    |
|-------------------------------|--------------------|
| <b>Engine Derated</b>         | Yes                |
| <b>Needs Towed</b>            | Yes                |
| <b>Cab</b>                    | Day                |
| <b>Engine</b>                 | MX13 Paccar        |
| <b>Transmission</b>           | Manual Eaton       |
| <b>State</b>                  | WV - West Virginia |
| <b>City</b>                   | Newell             |
| <b>Wheel Or Hook</b>          | Fifth Wheel        |
| <b>Steer Tire Size</b>        | 275/80/r22.5       |
| <b>Drive Tire Size</b>        | 275/80/r22.5       |
| <b>Rear Suspension</b>        | Air                |
| <b>Rear Suspension Rating</b> | 20,000 rears       |
| <b>Rear Axles</b>             | Locking            |
| <b>Wet Kit</b>                | N_A                |
| <b>APU</b>                    | No                 |
| <b>Last DOT Inspection</b>    | 2024-03-22         |
| <b>Out of Service Date</b>    | 2024-07-01         |

[Estimate-Fleet\\_15644529\\_v4.pdf20240730-356363-1ec5zce.pdf](#)