

# 2016 Peterbilt 579 Day

# Equipment Information



**Price:** \$24,500

**Location:** Spartanburg, SC

**Unit Number:** 1111445

**Unit Address:**

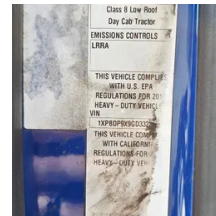
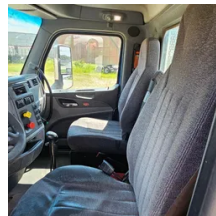
**City:** Spartanburg

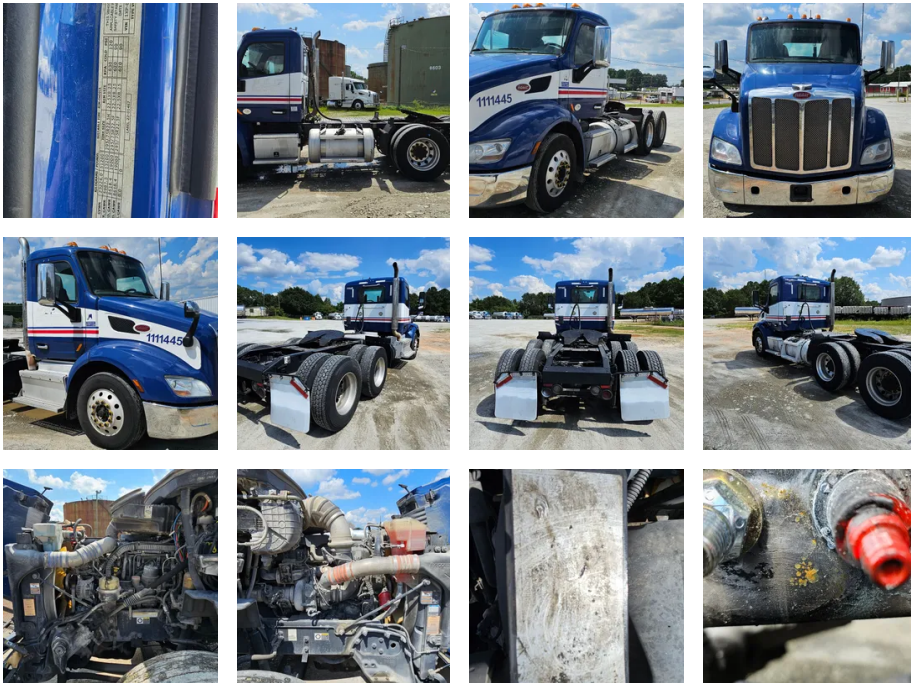
**State:** SC - South Carolina

## Comments:

Behind the right rear tires the frame is cracked, along with DEF faults.

<b>Make</b>	Peterbilt
<b>Model</b>	579
<b>Year</b>	2016
<b>Mileage</b>	721,272
<b>Fuel Type</b>	Diesel
<b>Drivable</b>	Yes
<b>Unit Starts and Runs</b>	Yes
<b>Check Engine Light</b>	On
<b>ABS Light</b>	Off
<b>Engine Derated</b>	No





<b>Needs Towed</b>	No
<b>Cab</b>	Day
<b>Engine</b>	MX-13 Paccar
<b>Transmission</b>	Manual Eaton Fuller
<b>State</b>	SC - South Carolina
<b>City</b>	Spartanburg
<b>Wheel Or Hook</b>	Fifth Wheel
<b>Steer Tire Size</b>	275/80R 22.5
<b>Drive Tire Size</b>	275/80R 22.5
<b>Rear Suspension</b>	Air
<b>Rear Axles</b>	Locking
<b>Wet Kit</b>	PTO
<b>APU</b>	No
<b>Last DOT Inspection</b>	2024-04-24
<b>Out of Service Date</b>	2024-08-21

[Estimate\\_15863497.pdf](#)

