

# 2015 VOLVO VNL Day



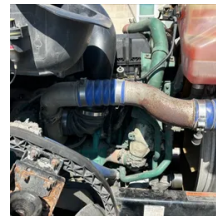
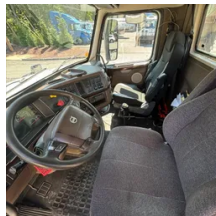
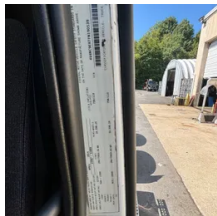
## Equipment Information

**Price:** \$24,500  
**Location:** Wharton, NJ  
**Unit Number:** 60155  
**Unit Address:**  
**City:** Wharton  
**State:** NJ - New Jersey

### Comments:

TRUCK HAS BAD FUEL INJECTORS. FUEL IS MIXING INTO THE OIL.

<b>Make</b>	VOLVO
<b>Model</b>	VNL
<b>Year</b>	2015
<b>Mileage</b>	665,162
<b>Fuel Type</b>	Diesel
<b>Drivable</b>	Yes
<b>Unit Starts and Runs</b>	Yes
<b>Check Engine Light</b>	On
<b>ABS Light</b>	Off
<b>Engine Derated</b>	No





<b>Needs Towed</b>	No
<b>Cab</b>	Day
<b>Engine</b>	D13 Volvo
<b>Transmission</b>	Manual VOLVO
<b>State</b>	NJ - New Jersey
<b>City</b>	Wharton
<b>Steer Tire Size</b>	11r/22.5
<b>Drive Tire Size</b>	11r/22.5
<b>Rear Suspension</b>	Air
<b>Rear Suspension Rating</b>	20000
<b>Rear Axles</b>	Tag
<b>Wet Kit</b>	PTO
<b>APU</b>	No
<b>Last DOT Inspection</b>	2024-05-30
<b>Out of Service Date</b>	2024-07-18

[Estimate 155.pdf](#)

