

# 2016 Peterbilt 579 Sleeper



## Equipment Information

**Price:** \$32,000

**Location:** Newell, WV

**Unit Number:** 2211536

**Unit Address:**

**City:** Newell

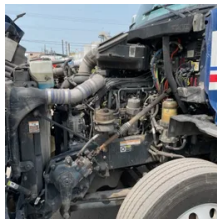
**State:** WV - West Virginia

### Comments:

DRIVER'S SEAT IS BROKE THE BACK DOESN'T STAY IN PLACE -  
ADAPTICE CRUISE IS ON - CEL ON

<b>Make</b>	Peterbilt
<b>Model</b>	579
<b>Year</b>	2016
<b>Mileage</b>	771,403
<b>Fuel Type</b>	Diesel
<b>Drivable</b>	Yes
<b>Unit Starts and Runs</b>	Yes
<b>Check Engine Light</b>	On
<b>ABS Light</b>	Off
<b>Engine Derated</b>	No





<b>Needs Towed</b>	No
<b>Cab</b>	Sleeper
<b>Engine</b>	MX13 Paccar
<b>Transmission</b>	Automatic Eaton
<b>State</b>	WV - West Virginia
<b>City</b>	Newell
<b>Wheel Or Hook</b>	Fifth Wheel
<b>Steer Tire Size</b>	275/80/R22.5
<b>Drive Tire Size</b>	275/80/R22.5
<b>Rear Suspension</b>	Air
<b>Rear Suspension Rating</b>	20,000 rears
<b>Rear Axles</b>	Locking
<b>Wet Kit</b>	Hydrapak
<b>APU</b>	No
<b>Last DOT Inspection</b>	2022-11-03
<b>Out of Service Date</b>	2023-05-05

