

# 2014 PETERBILT 386 Sleeper



## Equipment Information

**Price:** \$38,000

**Location:** Hattiesburg, MS

**Unit Number:** 2213207

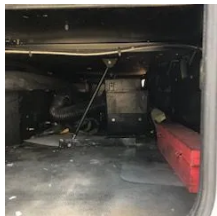
**Unit Address:**

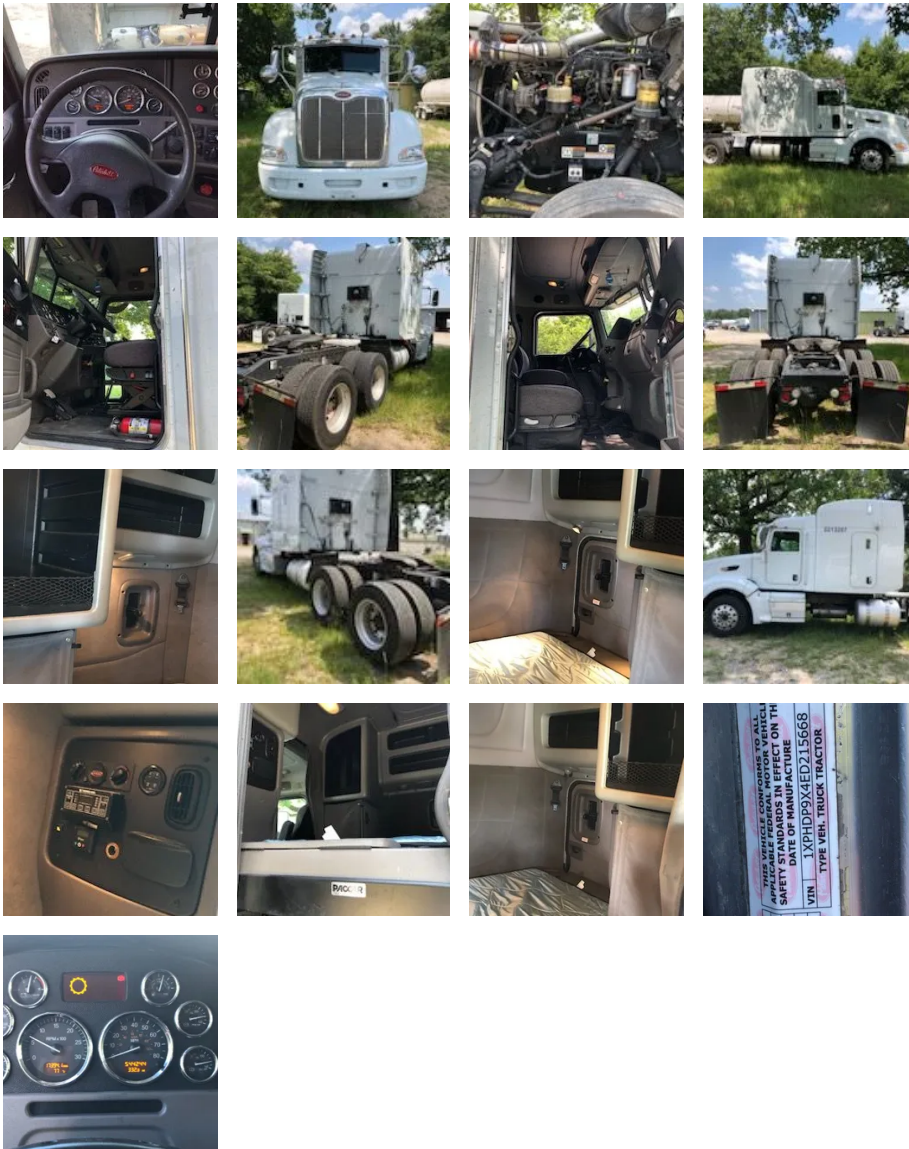
**City:** Hattiesburg

**State:** MS - Mississippi

Comments:

<b>Make</b>	PETERBILT
<b>Model</b>	386
<b>Year</b>	2014
<b>Mileage</b>	544,244
<b>Fuel Type</b>	Diesel
<b>Drivable</b>	Yes
<b>Unit Starts and Runs</b>	Yes
<b>Check Engine Light</b>	Off
<b>ABS Light</b>	Off
<b>Engine Derated</b>	No
<b>Needs Towed</b>	No





<b>Cab</b>	Sleeper
<b>Engine</b>	CPCR12.9MO1 PACCAR
<b>Transmission</b>	Manual EATON FULLER
<b>State</b>	MS - Mississippi
<b>City</b>	Hattiesburg
<b>Wheel Or Hook</b>	Fifth Wheel
<b>Steer Tire Size</b>	Low Pro 22.5
<b>Drive Tire Size</b>	Low Pro 22.5
<b>Rear Suspension</b>	Air
<b>Rear Suspension Rating</b>	31,900
<b>Rear Axles</b>	Locking
<b>Wet Kit</b>	N_A
<b>APU</b>	Yes
<b>APU</b>	TRI PAC
<b>Last DOT Inspection</b>	2022-11-16
<b>Out of Service Date</b>	2023-06-01

