

# 2015 Peterbilt 579 Sleeper



# Equipment Information

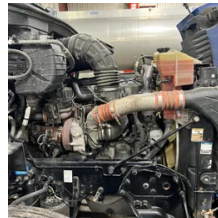
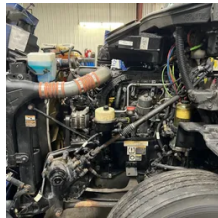
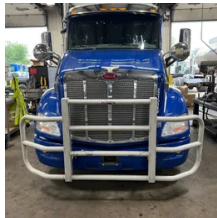
**Price:** \$27,500  
**Location:** Mcfarland, WI  
**Unit Number:** 2210349  
**Unit Address:**  
**City:** Mcfarland  
**State:** WI - Wisconsin

## Comments:

SEAT BACK ON DRIVER SEAT WONT STAY IN POSITION

<b>Make</b>	Peterbilt
<b>Model</b>	579
<b>Year</b>	2015
<b>Mileage</b>	816,500
<b>Fuel Type</b>	Diesel
<b>Drivable</b>	Yes
<b>Unit Starts and Runs</b>	Yes
<b>Check Engine Light</b>	Off
<b>ABS Light</b>	Off
<b>Engine Derated</b>	No





<b>Needs Towed</b>	No
<b>Cab</b>	Sleeper
<b>Engine</b>	MX Paccar
<b>Transmission</b>	Manual Eaton
<b>State</b>	WI - Wisconsin
<b>City</b>	Mcfarland
<b>Wheel Or Hook</b>	Fifth Wheel
<b>Steer Tire Size</b>	275/80R22.5
<b>Drive Tire Size</b>	275/80R22.5
<b>Rear Suspension</b>	Air
<b>Rear Suspension Rating</b>	38000
<b>Rear Axles</b>	Locking
<b>Wet Kit</b>	PTO
<b>APU</b>	Yes
<b>APU</b>	Thermoking
<b>Last DOT Inspection</b>	2023-07-07
<b>Out of Service Date</b>	2023-07-13

