

2015 FREIGHTLINER CASCADIA Sleeper

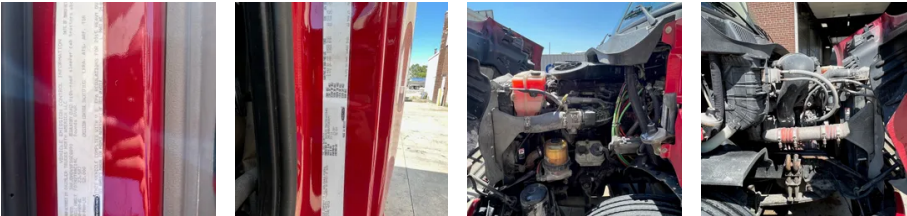


Equipment Information

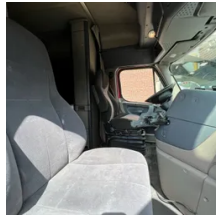
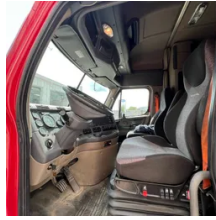
Price: \$35,000
Location: Midland, MI
Unit Number: 2214189
Unit Address:
City: Midland
State: MI - Michigan

Comments:

Make	FREIGHTLINER
Model	CASCADIA
Year	2015
Mileage	756,540
Fuel Type	Diesel
Drivable	Yes
Unit Starts and Runs	Yes
Check Engine Light	Off
ABS Light	Off
Engine Derated	No
Needs Towed	No



IMPORTANT ENGINE INFORMATION:
 FUEL RATE AT ROL: 84.5 GPH @ 1700-RPM
 INITIAL INJECTION TIMING: 19.0 DEG BTDC
 ENGINE FULLY EQUIPPED
 UNIT: 4218258247811
 DIS: 17.8 LITERS
 REV RPM: 500 @ 1800 RPM MODEL: 0013
 MAX. CRANK RPM: 2000 MIN. IDLE: 500 RPM
 WASH. EXHAUST: 0.6 FT INTRK: 0.4 FT
 CELESTED RESIDENTY
 EMISSION CONTROL SYSTEMS: 001, TC, CAC,
 EGR, EGR OF, PDM, SCR-U, WDK
 FOR USE IN: MICHIGAN, OR TRACTOR
 VEHICLES
 THIS ENGINE CONFORMS TO U.S. EPA AND
 CALIFORNIA REGULATIONS APPLICABLE TO
 DIESEL ENGINES. THIS ENGINE HAS A PRIMARY
 SERVICE APPLICATION AS A MEDIUM-DUTY
 ENGINE. THIS ENGINE IS NOT INTENDED FOR
 USE IN MICHIGAN. SEE 49 CFR 103.21
 FOR USE IN MICHIGAN. SEE 49 CFR 103.21
 FOR USE IN MICHIGAN. SEE 49 CFR 103.21



Cab	Sleeper
Engine	DD13 DETRIOT
Transmission	Automatic EATON
State	MI - Michigan
City	Midland
Wheel Or Hook	Fifth Wheel
Steer Tire Size	LP22.5
Drive Tire Size	LP22.5
Rear Suspension	Air
Rear Suspension Rating	40000
Rear Axles	Locking
Wet Kit	N_A
APU	No
Last DOT Inspection	2023-05-15
Out of Service Date	2023-07-21