

# 2014 PETERBILT 386 Sleeper



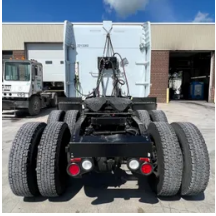
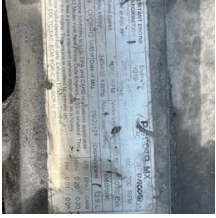
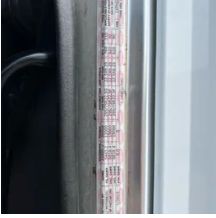
## Equipment Information

**Price:** \$35,000  
**Location:** Midland, MI  
**Unit Number:** 2213202  
**Unit Address:**  
**City:** Midland  
**State:** MI - Michigan

### Comments:

<b>Make</b>	PETERBILT
<b>Model</b>	386
<b>Year</b>	2014
<b>Mileage</b>	766,186
<b>Fuel Type</b>	Diesel
<b>Drivable</b>	Yes
<b>Unit Starts and Runs</b>	Yes
<b>Check Engine Light</b>	Off
<b>ABS Light</b>	Off
<b>Engine Derated</b>	No
<b>Needs Towed</b>	No





<b>Cab</b>	Sleeper
<b>Engine</b>	MX13 PACCAR
<b>Transmission</b>	Manual EATON
<b>State</b>	MI - Michigan
<b>City</b>	Midland
<b>Wheel Or Hook</b>	Fifth Wheel
<b>Steer Tire Size</b>	LP22.5
<b>Drive Tire Size</b>	LP22.5
<b>Rear Suspension</b>	Air
<b>Rear Suspension Rating</b>	40000
<b>Rear Axles</b>	Locking
<b>Wet Kit</b>	PTO
<b>APU</b>	Yes
<b>APU</b>	THERMOKING
<b>Last DOT Inspection</b>	2023-06-12
<b>Out of Service Date</b>	0023-07-21

