

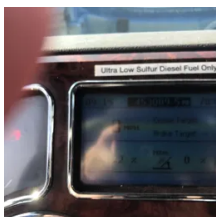
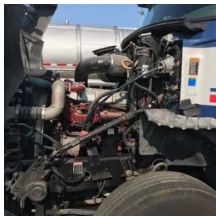
## A blue and white Mack truck is parked on a gravel surface. The truck features a white cab with blue and red stripes. The number "1110855" is visible on the side of the cab. The truck has a large chrome exhaust stack and a chrome bumper. The background shows green foliage and a clear sky.



Comments:

Clutch and trans need replacement

|                             |          |
|-----------------------------|----------|
| <b>Make</b>                 | Mack     |
| <b>Model</b>                | Pinnacle |
| <b>Year</b>                 | 2015     |
| <b>Mileage</b>              | 453,089  |
| <b>Fuel Type</b>            | Diesel   |
| <b>Drivable</b>             | No       |
| <b>Unit Starts and Runs</b> | Yes      |
| <b>Check Engine Light</b>   | Off      |
| <b>ABS Light</b>            | Off      |
| <b>Engine Derated</b>       | No       |



|                            |               |
|----------------------------|---------------|
| <b>Needs Towed</b>         | Yes           |
| <b>Cab</b>                 | Day           |
| <b>Engine</b>              | MP8-445C Mack |
| <b>Transmission</b>        | Manual Fuller |
| <b>State</b>               | IN - Indiana  |
| <b>City</b>                | Indianapolis  |
| <b>Wheel Or Hook</b>       | Fifth Wheel   |
| <b>Steer Tire Size</b>     | 275/80R 22.5  |
| <b>Drive Tire Size</b>     | 275/80R 22.5  |
| <b>Rear Suspension</b>     | Air           |
| <b>Rear Axles</b>          | Locking       |
| <b>Wet Kit</b>             | N_A           |
| <b>APU</b>                 | No            |
| <b>Last DOT Inspection</b> | 2023-04-18    |
| <b>Out of Service Date</b> | 2023-06-25    |

[Estimate\\_17127391.pdf](#)

