

2014 Peterbilt 386 Sleeper



Equipment Information

Price: \$24,000

Location: Nashville, TN

Unit Number: 2213223

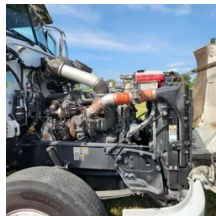
Unit Address:

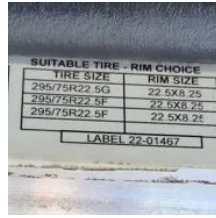
City: Nashville

State: TN - Tennessee

Comments:

| | |
|-----------------------------|-----------|
| Make | Peterbilt |
| Model | 386 |
| Year | 2014 |
| Mileage | 577,321 |
| Fuel Type | Diesel |
| Drivable | Yes |
| Unit Starts and Runs | Yes |
| Check Engine Light | On |
| ABS Light | Off |
| Engine Derated | No |
| Needs Towed | No |





| | |
|---------------------|---------------------|
| Cab | Sleeper |
| Engine | MX Paccar |
| Transmission | Manual EATON FULLER |
| State | TN - Tennessee |
| City | Nashville |
| Wheel Or Hook | Fifth Wheel |
| Steer Tire Size | |
| Drive Tire Size | |
| Rear Suspension | Air |
| Rear Axles | Locking |
| Wet Kit | N_A |
| APU | No |
| Last DOT Inspection | 2023-05-24 |
| Out of Service Date | 2023-08-02 |