

# 2015 Peterbilt 579 TAG AXLE Day

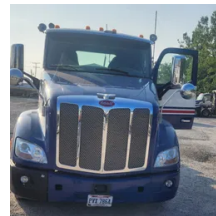
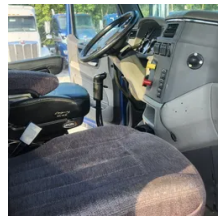
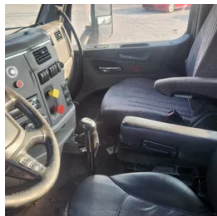
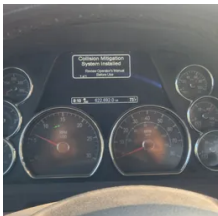


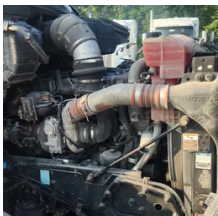
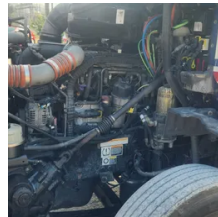
# Equipment Information

**Price:** \$30,000  
**Location:** Pittsburgh, PA  
**Unit Number:** 1110497  
**Unit Address:**  
**City:** Pittsburgh  
**State:** PA - Pennsylvania

**Comments:**  
TAG AXLE

<b>Make</b>	Peterbilt
<b>Model</b>	579 TAG AXLE
<b>Year</b>	2015
<b>Mileage</b>	622,692
<b>Fuel Type</b>	Diesel
<b>Drivable</b>	Yes
<b>Unit Starts and Runs</b>	Yes
<b>Check Engine Light</b>	Off
<b>ABS Light</b>	Off
<b>Engine Derated</b>	No





<b>Needs Towed</b>	No
<b>Cab</b>	Day
<b>Engine</b>	MX13 430HP 2013 EPA Paccar
<b>Transmission</b>	Manual Eaton
<b>State</b>	PA - Pennsylvania
<b>City</b>	Pittsburgh
<b>Wheel Or Hook</b>	Fifth Wheel
<b>Steer Tire Size</b>	22.5
<b>Drive Tire Size</b>	22.5
<b>Rear Suspension</b>	Air
<b>Rear Axles</b>	Locking
<b>Wet Kit</b>	N_A
<b>APU</b>	No
<b>Last DOT Inspection</b>	2023-07-31
<b>Out of Service Date</b>	2023-08-04