

## 2014 Peterbilt 384 Day



## Equipment Information

**Price:** \$24,000

**Location:** West Sacramento, CA

**Unit Number:** 648609

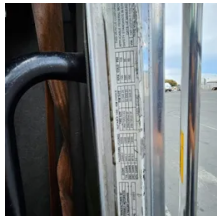
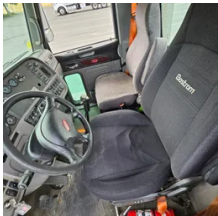
**Unit Address:**

**City:** West Sacramento

**State:** CA - California

**Comments:**

|                             |           |
|-----------------------------|-----------|
| <b>Make</b>                 | Peterbilt |
| <b>Model</b>                | 384       |
| <b>Year</b>                 | 2014      |
| <b>Mileage</b>              | 492,864   |
| <b>Fuel Type</b>            | Diesel    |
| <b>Drivable</b>             | Yes       |
| <b>Unit Starts and Runs</b> | Yes       |
| <b>Check Engine Light</b>   | Off       |
| <b>ABS Light</b>            | Off       |
| <b>Engine Derated</b>       | No        |
| <b>Needs Towed</b>          | No        |



|                            |                     |
|----------------------------|---------------------|
| <b>Cab</b>                 | Day                 |
| <b>Engine</b>              | mx13 Paccar         |
| <b>Transmission</b>        | Manual EATON FULLER |
| <b>State</b>               | CA - California     |
| <b>City</b>                | West Sacramento     |
| <b>Wheel Or Hook</b>       | Fifth Wheel         |
| <b>Steer Tire Size</b>     | 275/80/22.5         |
| <b>Drive Tire Size</b>     | 445/50/22.5         |
| <b>Rear Suspension</b>     | Air                 |
| <b>Rear Axles</b>          | Locking             |
| <b>Wet Kit</b>             | N_A                 |
| <b>APU</b>                 | No                  |
| <b>Last DOT Inspection</b> | 2023-06-13          |
| <b>Out of Service Date</b> | 2023-08-14          |