

# 2013 Kenworth T660 Cab & Chassis

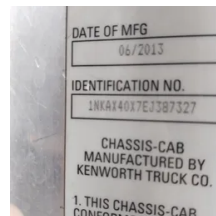
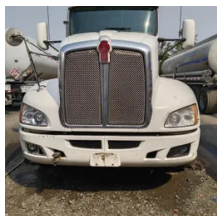
# Equipment Information



**Price:** \$32,000  
**Location:** Portland, OR  
**Unit Number:** 1110212  
**Unit Address:**  
**City:** Portland  
**State:** OR - Oregon

## Comments:

|                             |          |
|-----------------------------|----------|
| <b>Make</b>                 | Kenworth |
| <b>Model</b>                | T660     |
| <b>Year</b>                 | 2013     |
| <b>Mileage</b>              | 857,989  |
| <b>Fuel Type</b>            | Diesel   |
| <b>Drivable</b>             | Yes      |
| <b>Unit Starts and Runs</b> | Yes      |
| <b>Check Engine Light</b>   | Off      |
| <b>ABS Light</b>            | Off      |
| <b>Engine Derated</b>       | No       |
| <b>Needs Towed</b>          | No       |





|                               |                |
|-------------------------------|----------------|
| <b>Cab</b>                    | Cab & Chassis  |
| <b>Engine</b>                 | ISX 15 Cummins |
| <b>Transmission</b>           | Manual Eaton   |
| <b>State</b>                  | OR - Oregon    |
| <b>City</b>                   | Portland       |
| <b>Wheel Or Hook</b>          | Pintel Hook    |
| <b>Steer Tire Size</b>        | 275/80R22.5    |
| <b>Drive Tire Size</b>        | 445 / 50 R22.5 |
| <b>Rear Suspension</b>        | Air            |
| <b>Rear Suspension Rating</b> | 20,000         |
| <b>Rear Axles</b>             | Locking        |
| <b>Wet Kit</b>                | N_A            |
| <b>APU</b>                    | No             |
| <b>Last DOT Inspection</b>    | 2023-07-13     |
| <b>Out of Service Date</b>    | 2023-05-01     |