

## 2014 peterbilt 384 Day



## Equipment Information

**Price:** \$10,000

**Location:** Theodore, AL

**Unit Number:** 648571

**Unit Address:**

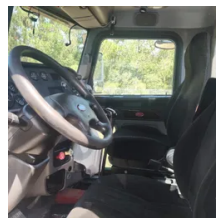
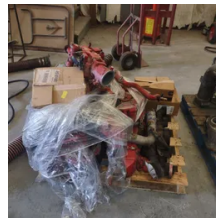
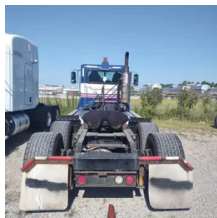
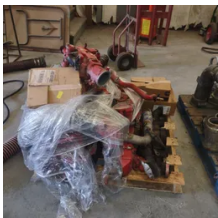
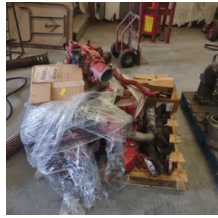
**City:** Theodore

**State:** AL - Alabama

### Comments:

engine is apart and on a pallet.hole in #6 piston

Make	peterbilt
Model	384
Year	2014
Mileage	418,060
Fuel Type	CNG
Drivable	No
Unit Starts and Runs	No
Check Engine Light	Off
ABS Light	Off
Engine Derated	No



<b>Needs Towed</b>	Yes
<b>Cab</b>	Day
<b>Engine</b>	isx 430 HP cummins
<b>Transmission</b>	Manual eaton
<b>State</b>	AL - Alabama
<b>City</b>	Theodore
<b>Wheel Or Hook</b>	Fifth Wheel
<b>Steer Tire Size</b>	275/80/22.5
<b>Drive Tire Size</b>	445/45/22.5
<b>Rear Suspension</b>	Air
<b>Rear Axles</b>	Locking
<b>Wet Kit</b>	N_A
<b>APU</b>	No
<b>Last DOT Inspection</b>	2022-04-01
<b>Out of Service Date</b>	2023-09-05

