

2014 Peterbilt 386 Sleeper



Equipment Information

Price: \$28,000

Location: Hattiesburg, MS

Unit Number: 2213230

Unit Address:

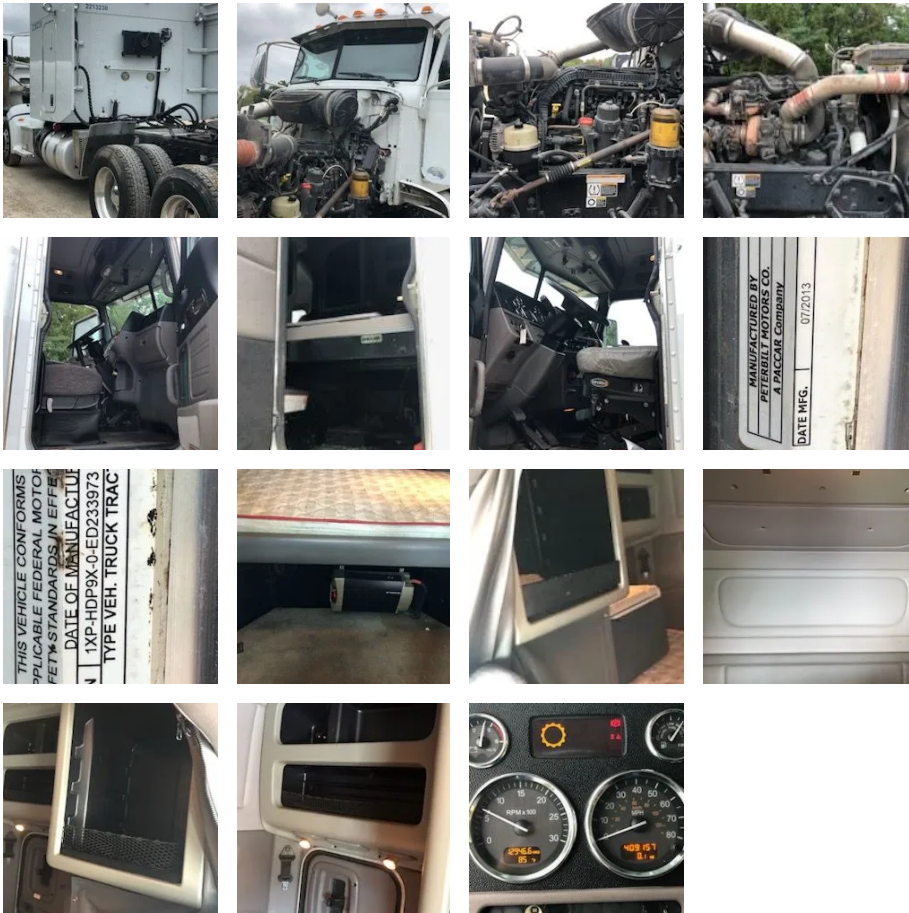
City: Hattiesburg

State: MS - Mississippi

Comments:

| | |
|-----------------------------|-----------|
| Make | Peterbilt |
| Model | 386 |
| Year | 2014 |
| Mileage | 409,158 |
| Fuel Type | Diesel |
| Drivable | Yes |
| Unit Starts and Runs | Yes |
| Check Engine Light | Off |
| ABS Light | Off |
| Engine Derated | No |
| Needs Towed | No |





| | |
|-------------------------------|------------------|
| Cab | Sleeper |
| Engine | MX-13 PACCAR |
| Transmission | Manual Eaton |
| State | MS - Mississippi |
| City | Hattiesburg |
| Wheel Or Hook | Fifth Wheel |
| Steer Tire Size | LP 22.5 |
| Drive Tire Size | LP 22.5 |
| Rear Suspension | Air |
| Rear Suspension Rating | 38000 |
| Rear Axles | Locking |
| Wet Kit | Hydrapak |
| APU | Yes |
| APU | Thermo King |
| Last DOT Inspection | 2022-07-28 |
| Out of Service Date | 2023-09-01 |

[2213230.msg](#)

