

## 2014 Peterbilt 384 Day



## Equipment Information

**Price:** \$20,000

**Location:** Houston, TX

**Unit Number:** 648573

**Unit Address:**

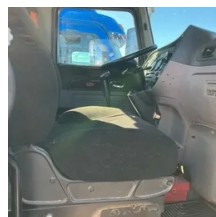
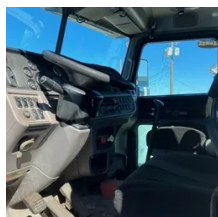
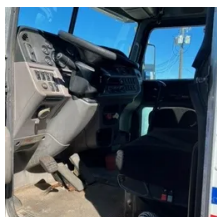
**City:** Houston

**State:** TX - Texas

### Comments:

TRUCK DOESNT START, WE HAVE NO KEY, TRYING TO GET KEY FROM DEALER

<b>Make</b>	Peterbilt
<b>Model</b>	384
<b>Year</b>	2014
<b>Mileage</b>	372,772
<b>Fuel Type</b>	CNG
<b>Drivable</b>	No
<b>Unit Starts and Runs</b>	No
<b>Check Engine Light</b>	Off
<b>ABS Light</b>	Off
<b>Engine Derated</b>	No



<b>Needs Towed</b>	Yes
<b>Cab</b>	Day
<b>Engine</b>	ISX12G Cummins
<b>Transmission</b>	Manual EATON
<b>State</b>	TX - Texas
<b>City</b>	Houston
<b>Wheel Or Hook</b>	Fifth Wheel
<b>Steer Tire Size</b>	LP 22.5
<b>Drive Tire Size</b>	22.5
<b>Rear Suspension</b>	Air
<b>Rear Suspension Rating</b>	40000
<b>Rear Axles</b>	Locking
<b>Wet Kit</b>	N_A
<b>APU</b>	No
<b>Last DOT Inspection</b>	2022-05-03
<b>Out of Service Date</b>	2023-10-31

