

# 2018 Peterbilt 579 Sleeper



## Equipment Information

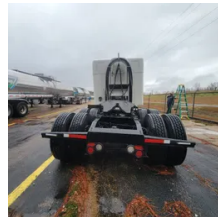
**Price:** \$20,000  
**Location:** Plaquemine, LA  
**Unit Number:** 2214758  
**Unit Address:**  
**City:** Plaquemine  
**State:** LA - Louisiana

### Comments:

Truck was wrecked and left here at our terminal. I don't have keys for truck so I can't get a picture of the dash turned on.

<b>Make</b>	Peterbilt
<b>Model</b>	579
<b>Year</b>	2018
<b>Mileage</b>	511,680
<b>Fuel Type</b>	Diesel
<b>Drivable</b>	No
<b>Unit Starts and Runs</b>	No
<b>Check Engine Light</b>	On
<b>ABS Light</b>	Off
<b>Engine Derated</b>	Yes





<b>Needs Towed</b>	Yes
<b>Cab</b>	Sleeper
<b>Engine</b>	mx13 Paccar
<b>Transmission</b>	Automatic Eaton
<b>State</b>	LA - Louisiana
<b>City</b>	Plaquemine
<b>Wheel Or Hook</b>	Fifth Wheel
<b>Steer Tire Size</b>	275/80r 22.5
<b>Drive Tire Size</b>	275/80r 22.5
<b>Rear Suspension</b>	Air
<b>Rear Suspension Rating</b>	40,000lbs
<b>Rear Axles</b>	Locking
<b>Wet Kit</b>	PTO
<b>APU</b>	No
<b>Last DOT Inspection</b>	2023-07-20
<b>Out of Service Date</b>	2023-07-20

[2214758.pdf](#)

Est\_7876\_from\_ABLE\_SPRING\_AND\_ALIGNMENT\_INC.12944.pdf